

Hiroshima Institute of Technology

Guide for international students
外国人留学生のための大学案内



広島工業大学

Hiroshima Institute of Technology (HIT) was established more than 50 years ago with the school philosophy that "Education is Love." We have maintained this spirit ever since and have now produced more than 49,000 graduates, many of whom are currently active in society as engineers. The Institute has a campus in the western part of Hiroshima City close to the world heritage site of the Itsukushima Shrine in Miyajima. The beautiful city of Hiroshima has many different faces, as a city of peace, a city of culture and an international city. The Institute strives to nurture professionals who will have both a strong sense of ethics and the ability to put things into practice.

Faculty of Engineering / 工学部

Department of Electronics and Computer Engineering / 電子情報工学科

Department Objectives

We will train you to be leading-edge electronic information engineers who are one step ahead of the times, focusing on the fields of electronic devices, circuits and communication, and information networks.

学科内容

電子デバイス分野、回路・通信分野、情報ネットワーク分野を柱に、時代をリードする最先端の電子情報技術者を育成します。

Career Options

- ▶Manufacturers of communication equipment, computers and electronic measuring instruments, etc.
- ▶Information processing software development company ▶Affiliated companies such as in-house information and communication systems ▶Manufacturers of automobiles, industrial machinery, semiconductor manufacturing equipment, etc.
- ▶Construction company for building communication equipment, electrical equipment, etc.
- ▶LSI manufacturing and circuit design company ▶Control software construction company for industrial robots ▶Sales company for electronic devices and home appliances
- ▶Public servant (technical) ▶Teacher (Industry, Information)
- ▶Graduate school

めざせる進路

- ▶通信機器・コンピュータ・電子計測器などのメーカー ▶情報処理ソフト開発会社
- ▶企業内情報通信システムなどの関連会社 ▶自動車・産業機械・半導体製造機器などのメーカー
- ▶ビル通信設備、電気設備などの施工会社 ▶LSIの製造・回路設計会社 ▶産業用ロボットなどの制御ソフト構築会社
- ▶電子機器・家電機器などの販売会社 ▶公務員(技術系) ▶教員(工業、情報) ▶大学院



Department of Electrical Systems Engineering / 電気システム工学科

Department Objectives

We will train you to be engineers who have acquired electrical engineering and related fields that is focusing on energy systems, information communication systems and computer systems.

学科内容

エネルギーシステム、情報通信システム、コンピューターシステムを中核とした、電気工学とその関連分野を身につけた技術者を育成します。

Career Options

- ▶Electronic and electrical related companies ▶Electricity and energy related companies
- ▶Communications companies such as broadcasting, telephone, internet, etc.
- ▶Information processing related companies such as software development, system engineers, etc.
- ▶Manufacturers of industrial machinery, transportation machinery, precision machinery, etc.
- ▶Construction companies ▶Service industry such as engineering and maintenance ▶Public servant (technical) ▶Teacher (Industry, Information)
- ▶Graduate school

めざせる進路

- ▶電子・電気関連会社 ▶電力・エネルギー関連会社 ▶放送、電話、インターネットなどの通信会社
- ▶ソフト開発、システムエンジニアなどの情報処理関連会社 ▶産業機械、輸送用機械、精密機械などの機械メーカー
- ▶建設会社 ▶エンジニアリング、メンテナンスなどのサービス業 ▶公務員(技術系) ▶教員(工業、情報) ▶大学院



Department of Mechanical Systems Engineering / 機械システム工学科

Department Objectives

We will train you to be engineers who can take on the challenge of new manufacturing, focusing on the four fields of digital manufacturing, advanced materials, environment and energy, and control systems.

学科内容

デジタルものづくり分野、先端材料分野、環境エネルギー分野、制御システム分野の4つの分野を柱に、新たなものづくりに挑戦できるエンジニアを養成します。

Career Options

- ▶Manufacturers of transportation equipments such as automobiles, aircrafts, and ships
- ▶General equipments and metal products manufacturers ▶System engineers ▶Service engineer
- ▶Mechanical design and technology design company ▶Service industry related to wholesale and retail
- ▶Construction industry such as facility construction and general construction
- ▶Public servant (technical) ▶Teacher (Industry, Information)
- ▶Graduate school

めざせる進路

- ▶自動車、航空機、船舶などの輸送機器メーカー ▶一般機器、金属製品メーカー ▶システムエンジニア
- ▶サービスエンジニア ▶機械設計、技術設計会社 ▶卸売・小売に関わるサービス業
- ▶設備工事・総合工事などの建設業 ▶公務員(技術系) ▶教員(工業、情報) ▶大学院



Department of Intelligent Mechanical Engineering / 知能機械工学科

Department Objectives

We will train you to be engineers who can acquire the intelligent technology of manufacturing in order for them to be able to design and produce and control for new machines and equipment based on that knowledge and technology.

学科内容

モノづくりの知能化技術を身につけ、その知識や技術を礎に、新たな機械・機器を設計・生産・制御できる技術者を育成します。

Career Options

- ▶Machine manufacturers such as robots and machine tools ▶Manufacturers of transportation equipment such as automobiles, aircrafts and ships ▶Nursing care and welfare equipment and medical equipment manufacturers ▶System engineers ▶Software development engineers ▶Automotive mechanics
- ▶Aircraft maintenance technician ▶Information service industry
- ▶Public servant (technical) ▶Teacher (Industry, Information)
- ▶Graduate school

めざせる進路

- ▶ロボット、工作機械などの機械メーカー ▶自動車、航空機、船舶などの輸送機械メーカー
- ▶介護・福祉機器、医療機器メーカー ▶システムエンジニア ▶ソフトウェア開発技術者 ▶自動車整備士
- ▶航空整備士 ▶情報サービス産業 ▶公務員(技術系) ▶教員(工業、情報) ▶大学院



広島工業大学は、創立から50年あまり、建学の精神「教育は愛なり」のもと49,000名を超える卒業生を輩出しており、その多くが技術者として社会で活躍しています。本学は世界遺産の厳島神社がある宮島にも近い広島市内西部にキャンパスがあります。平和都市、文化都市、国際都市といった様々な顔を持つ美しいまち広島で、高い倫理観と実践する力を備えた技術系人材の育成に励んでいます。

Department of Civil and Environmental Engineering / 環境土木工学科

Department Objectives

We will nurture civil engineers who have not only an expert knowledge of the planning, design, construction, and maintenance of social infrastructure, but also a wide range of technologies and skills required to respond to new social needs in the perspective of supporting local communities and preserving the natural environment.

学科内容

「社会基盤施設」の計画・設計・施工・維持管理を学び、さらに新しいニーズに対応した知識や技術を幅広く修得し、地域や生活を支え、環境面にも配慮できるエンジニアを育成します。

Career Options

- ▶ Large and mid-sized construction companies ▶ Construction consulting companies ▶ Road related companies ▶ Railway related companies
- ▶ Bridge related companies ▶ Concrete related companies
- ▶ Environment-related companies ▶ Public servant (technical)
- ▶ Teacher (Industry) ▶ Graduate school

めざせる進路

- ▶ 大手・中堅建設会社 ▶ 建設コンサルタント会社 ▶ 道路に関する会社 ▶ 鉄道に関する会社
- ▶ 橋に関する会社 ▶ コンクリートに関する会社 ▶ 環境関連会社 ▶ 公務員(技術系)
- ▶ 教員(工業) ▶ 大学院



Department of Architectural Engineering / 建築工学科

Department Objectives

We will train you to be building professionals who have high knowledge and skills to acquire national qualifications such as Class I Architect license and can do well in the fields of building design, construction, and subsequent maintenance.

学科内容

一級建築士等の国家資格の取得に向けた高い知識・技術を身に着けた、建物の設計から施工、その後の維持管理の分野で活躍できる建物づくりのプロフェッショナルを育成します。

Career Options

- ▶ Large and mid-sized construction companies ▶ Housing manufacturer ▶ Architectural design office
- ▶ Structural design office ▶ Building estimation office ▶ Facility construction company
- ▶ Various construction professionals ▶ Various manufacturing industries ▶ Public servant (technical)
- ▶ Teacher (Industry) ▶ Graduate school

めざせる進路

- ▶ 大手・中堅建設会社 ▶ 住宅メーカー ▶ 建築設計事務所 ▶ 構造設計事務所 ▶ 建築積算事務所
- ▶ 設備工事会社 ▶ 各種建築専門業 ▶ 各種製造業 ▶ 公務員(技術系) ▶ 教員(工業) ▶ 大学院



Faculty of Applied Information Science / 情報学部

Department of Computer Science / 情報工学科

Department Objectives

You can develop professional knowledge and skills in the field of computers, interfaces, and networks, and you can be an active engineer in the IoT society.

学科内容

IoT社会で活躍する技術者に必要な、コンピュータ分野、インタフェース分野、ネットワーク分野の専門知識とスキルを修得できます。

Career Options

- ▶ Information and communication industry ▶ Network engineer
- ▶ System engineer ▶ Security engineer ▶ Embedded system engineer
- ▶ Public servant (technical) ▶ Teacher (information) ▶ Graduate school

めざせる進路

- ▶ 情報通信業 ▶ ネットワークエンジニア ▶ システムエンジニア ▶ セキュリティ技術者
- ▶ 組込みシステム技術者 ▶ 公務員(技術系) ▶ 教員(情報) ▶ 大学院



Department of Information and Communication / 情報コミュニケーション学科

Department Objectives

In recent years, as information processing technology has been developed to a level close to human beings, we will train you to become engineers who can consider and propose how it can contribute to the society.

学科内容

近年、情報処理が人間に近い高度なものに発展している中、それがどのように社会に貢献できるかを考え、提案できる技術者を育成します。

Career Options

- ▶ Software development engineer ▶ System engineer ▶ System integrator
- ▶ IT Architect ▶ Web Application Engineer ▶ Programmer ▶ Data scientist ▶ IT designer ▶ Technical sales
- ▶ Public servant (technical) ▶ Teacher (Information) ▶ Graduate school

めざせる進路

- ▶ ソフトウェア開発技術者 ▶ システムエンジニア ▶ システムインテグレータ
- ▶ ITアーキテクト ▶ ウェブアプリケーションエンジニア ▶ プログラマー ▶ データサイエンティスト
- ▶ ITデザイナー ▶ 技術営業 ▶ 公務員(技術系) ▶ 教員(情報) ▶ 大学院



Faculty of Environmental Studies / 環境学部

Department of Architectural Design / 建築デザイン学科

Department Objectives

To train students in the fields necessary to qualify as Class I and Class II Architects: "Interior/Woodwork"; "Digital Design" and "Architecture" and thereby enable students to contribute productively to society in the future.

学科内容

一級・二級建築士などの資格取得に向けた知識・技術に加え「インテリア・木工」、「デジタルデザイン」、「建築」についても学び、人の暮らしを総合的にプロデュースし、デザインできる人材を育成します。

Career Options

- ▶ Construction company ▶ Architectural design office
- ▶ Housing related company ▶ Interior related company
- ▶ Building maintenance management related company
- ▶ Furniture manufacturer ▶ Construction material manufacturer
- ▶ Forestry and timber industry ▶ Public servant (technical)
- ▶ Teacher (Industry) ▶ Graduate school

めざせる進路

- ▶ 建設会社 ▶ 建築設計事務所 ▶ 住宅関連企業
- ▶ インテリア関連企業 ▶ 建物維持管理関連企業
- ▶ 家具メーカー ▶ 建設材料メーカー ▶ 林業・木材産業
- ▶ 公務員(技術系) ▶ 教員(工業) ▶ 大学院



Department of Global Environment Studies / 地球環境学科

Department Objectives

We will train you as developed human resources who understand the three fields of "earth science", "environmental symbiosis", "environmental information", and have the practical ability to perform observation, analysis, evaluation, and planning that lead to global environmental problems.

学科内容

「地球科学」、「環境共生」、「環境情報」の3つの分野を理解し、地球環境問題に結びつく観測・分析・評価・計画ができる実践力を備えた人材を育成します。

Career Options

- ▶ Environmental consulting company ▶ Construction consulting company
- ▶ Recycling and industrial waste treatment related company
- ▶ Environmental survey and analysis related company
- ▶ Information system related company ▶ Information processing related company ▶ Construction companies ▶ Various manufacturing industries
- ▶ Public organizations ▶ Public servant (technical) ▶ Teacher (Information and Science) ▶ Graduate school

めざせる進路

- ▶ 環境コンサルタント会社 ▶ 建設コンサルタント会社 ▶ リサイクル・産業廃棄物処理関連会社
- ▶ 環境調査・分析関連会社 ▶ 情報システム関連会社 ▶ 情報処理関連会社 ▶ 建設会社 ▶ 各種製造業
- ▶ 公共団体 ▶ 公務員(技術系) ▶ 教員(情報・理科) ▶ 大学院



Faculty of Life Sciences / 生命学部

Department of Clinical Engineering / 生体医工学科

Department Objectives

Now is the time when multifunctional medical devices and information systems support advanced medical care. We will train you to be clinical engineering technicians who have the engineering expertise of medical equipment and the operation, maintenance and management skills of equipment required as a member of team medical care.

学科内容

多機能医療機器や情報システムが高度医療を支える時代。医療機器に関する工学的な専門知識とチーム医療の一員として求められる機器の操作・保守・管理技術を有した臨床工学技士を養成します。

Career Options

- ▶ General hospitals ▶ Clinics ▶ Dialysis clinics
- ▶ Teachers at universities and vocational schools (after 5 years of work experience)
- ▶ Medical equipment manufacturers ▶ Pharmaceutical manufacturers
- ▶ Welfare equipment manufacturers ▶ Medical equipment dealers ▶ Pharmaceutical dealers
- ▶ Welfare equipment dealers ▶ Public servants
- ▶ Researchers at research institutes and universities
- ▶ Graduate School

めざせる進路

- ▶ 総合病院 ▶ 診療所 ▶ 透析クリニック ▶ 大学、専門学校などの教員(5年の実務経験後)
- ▶ 医療機器メーカー ▶ 医薬品メーカー ▶ 福祉機器メーカー ▶ 医療機器ディーラー
- ▶ 医薬品ディーラー ▶ 福祉機器ディーラー ▶ 公務員 ▶ 研究所、大学などの研究員 ▶ 大学院



Department of Food Sciences and Biotechnology / 食品生命科学科

Department Objectives

We will empower you to be food manufacturing engineers and bioengineers with practical as well as collaborative skills, high ethical standards and strong communication skills, who have acquired expertise in two areas of specialization, "applied biology" and "food manufacturing".

学科内容

「応用生物分野」と「食品製造分野」の2つの専門分野で専門知識を生かす理論と技術を修得し、実践力・協調性・倫理観・コミュニケーション能力などを備えた食品製造技術者やバイオ技術者を養成します。

Career Options

- ▶ Food manufacturing industry ▶ Environment and Chemical industry
- ▶ Agribusiness ▶ Pharmaceutical and Cosmetic industry
- ▶ Wholesale and retail trade (food, pharmaceuticals, etc.)
- ▶ Public servant (technical) ▶ Teacher (Science) ▶ Graduate school

めざせる進路

- ▶ 食品製造業界 ▶ 環境・化学関連業界 ▶ アグリビジネス ▶ 製薬・化粧品業界
- ▶ 卸売・小売業(食品・医薬品等) ▶ 公務員(技術系) ▶ 教員(理科) ▶ 大学院



Yearly Schedule

At Hiroshima Institute of Technology, there are many events to make you grow yourself and deepen your friendship with your schoolmates. Please participate actively, be involved with many people, and have a meaningful school life.

年間スケジュール

広島工大には、自分自身を成長させ、仲間との友情を深めるイベントがたくさんあります。積極的に参加をして、たくさんの人たちと触れ合い、充実した学生生活を送ってください。

April

- ▶ Accepting short term exchange students from Shenyang Aerospace University (~August)
- ▶ An oath entrance ceremony
- ▶ Guidance
- ▶ Welcome party for new students, health checkup
- ▶ Start of the first semester, Course registration period
- ▶ Orientation and Seminar for New Students

- ▶ 瀋陽航空航天大学短期留学生受入れ(~8月)
- ▶ 入学宣誓式
- ▶ ガイダンス
- ▶ 新入生歓迎会、健康診断
- ▶ 前期授業開始、履修申請期間
- ▶ 新入生オリエンテーション・ゼミナール



May

- ▶ Sports event with ball at first semester
- ▶ Sports Festival
- ▶ Student competition
- ▶ Accepting short term exchange students from University of Illinois and Trinity Western University (~June)

- ▶ 前期球技大会
- ▶ あおぞら運動会
- ▶ 学生大会
- ▶ イリノイ大学、トリニティ・ウエスタン大学短期留学生受入れ(~6月)



June

- ▶ Term - End Exam (First quarter)
- ▶ Regular concert

- ▶ 期末試験(第1クォーター科目)
- ▶ 定期演奏会



July

- ▶ End of the first semester
- ▶ Term - End Exam (second quarter)
- ▶ Open campus

- ▶ 前期授業終了
- ▶ 期末試験(第2クォーター・前期科目)
- ▶ オープンキャンパス



August

- ▶ Term - End Exam (second quarter)
- ▶ Summer holidays (~September)
- ▶ Open campus
- ▶ Internship

- ▶ 期末試験(第2クォーター・前期科目)
- ▶ 夏季休業(~9月)
- ▶ オープンキャンパス
- ▶ インターンシップ



September

- ▶ Enrolled student guidance
- ▶ Martial arts demonstrations Festival
- ▶ Start of the second semester, Course modification period
- ▶ Parent "education conference"
- ▶ Accepting short term exchange student from Shenyang Aerospace University (~February)

- ▶ 在学生ガイダンス
- ▶ 演武祭
- ▶ 後期授業開始、履修修正期間
- ▶ 保護者「教育懇談会」
- ▶ 瀋陽航空航天大学短期留学生受入れ(~2月)



October

- ▶ Sports event with ball at second semester
- ▶ Parent "education conference"
- ▶ Conference for going to graduate school or finding employment

- ▶ 後期球技大会
- ▶ 保護者「教育懇談会」
- ▶ 就職・進学懇談会



November

- ▶ HIT Festival
- ▶ Winter art exhibition
- ▶ Lecture meeting on sports
- ▶ Term - End Exam (Third quarter)

- ▶ 工大祭
- ▶ 冬の芸術展
- ▶ スポーツ講演会
- ▶ 期末試験(第3クォーター科目)



December

- ▶ Winter holidays (~January)
- ▶ Miyake Ekiden

- ▶ 冬季休業(~1月)
- ▶ 三宅駅伝大会



January

- ▶ Cutting Kagamimochi
- ▶ End of second semester
- ▶ Term - End Exam (Fourth quarter)

- ▶ 鏡開き
- ▶ 後期授業終了
- ▶ 期末試験(第4クォーター・後期科目)



February

- ▶ Term - End Exam (Fourth quarter)
- ▶ End of school year holidays (~March)
- ▶ Senior thesis presentation
- ▶ In-house combined business industry research fair

- ▶ 期末試験(第4クォーター・後期科目)
- ▶ 学年末休業(~3月)
- ▶ 卒業研究発表会
- ▶ 学内合同の業界研究会



March

- ▶ Commencement
- ▶ In-house combined company briefing fair

- ▶ 卒業証書・学位記授与式
- ▶ 学内合同の会社説明会



International Stu



LYU BAOHE / China

Major in Biological and Biomedical Engineering,
Graduate School of Science and Technology (Master's program)

呂保鶴 / 中国出身

大学院 工学系研究科(博士前期課程) 生命機能工学専攻

Reason for choosing Hiroshima Institute of Technology

I came to Japan so that I could further deepen my investigation of topics I had been researching in China. I had visited HIT to seek advice before I decided to enroll, and the extremely kind treatment I received ended up being the deciding factor.

広島工業大学に決めた理由

中国で研究していたテーマをさらに深めたいと考え、日本に留学しました。本学には入学前から相談に訪れていたのですが、とても親切に対応してくださったのが入学の決め手となりました。

Appeal of Hiroshima Institute of Technology

A professor from China sits down with me regularly, which is extremely encouraging. Those talks help me feel at ease, and they give me a chance to seek advice about topics like my studies and scholarships.

広島工業大学の魅力

同じ中国出身の先生が、定期的に面談をしてくれるのでとても心強いです。勉学面はもちろん、奨学金のことなども、安心して相談できます。

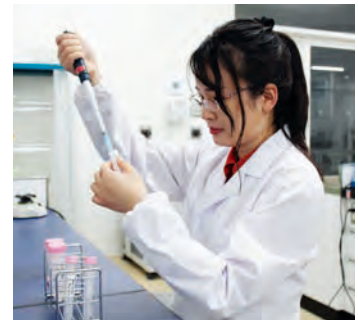


Field of study

I'm conducting research into technology for propagating plants by means of a grafting technique. Right now, I'm searching for mechanisms for encouraging chrysanthemum plants to take root while experimenting with a variety of reagents.

学んでいること

挿し芽による植物の増殖技術の研究をしています。現在は様々な試薬を試しながら、菊の発根を促すメカニズムを探っています。

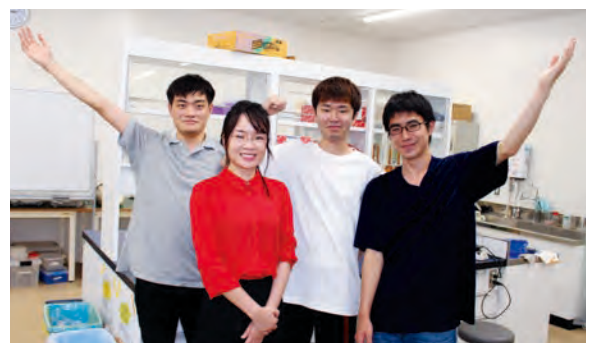


Message for international students

HIT offers an extensive range of scholarships, including a tuition exemption program for international students, and it provides the support students need to dedicate themselves to research with peace of mind. The professors and instructors are extremely kind!

留学生へのメッセージ

広島工業大学には留学生を対象とした学費減免制度をはじめ、奨学金も豊富にあり、安心して研究に打ち込めるサポート体制が整っています。先生や職員の方たちもとても親切ですよ!





XIAO TIAN / China

Major in Intelligent Structure and Functional Science,
Graduate School of Science and Technology (Doctoral program)

肖天 / 中国出身

大学院 工学系研究科 (博士後期課程) 知的機能科学専攻



Reason for choosing Hiroshima Institute of Technology

I learned about my current advisor (Professor Wang) and his research through a scientific society while I was still in China. I chose HIT out of a desire to work with him to pursue specialized knowledge.

広島工業大学に決めた理由

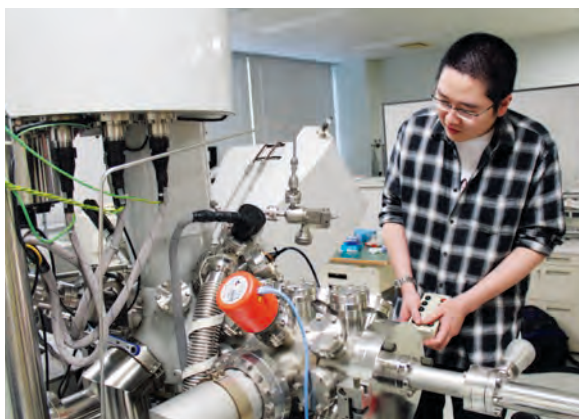
母国にいた頃から学会を通じて、現在の担当教授(王先生)とその研究について知っていました。先生のもとで専門知識を深めたいと考え、広島工業大学を選択しました。

Appeal of Hiroshima Institute of Technology

Right now, as I focus all of my energy on research in order to earn my doctoral degree, free access to the latest equipment and laboratory facilities is appealing. Thanks to this access, I'm making great progress in my research.

広島工業大学の魅力

現在、博士の学位を取得するため、研究に全力を注いでいるのですが、最新の装置や研究室を自由に使えるのは魅力です。おかげで研究もはかどっています。

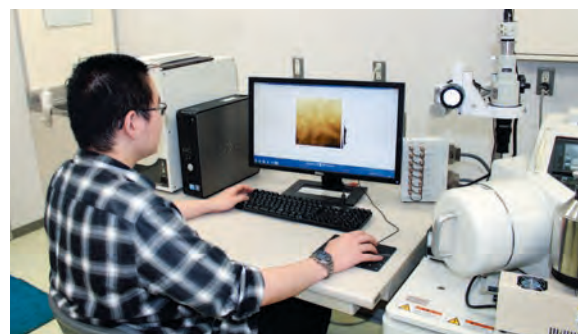


Field of study

In a word, I'm working on materials research. I'm using metallized plating to study metal components in an effort to improve their performance.

学んでいること

ひと言でいうと、材料系の研究に従事しています。めっきを用いて金属成分の調整を行い、性能を向上させることを試んでいます。



Message for international students

HIT offers an ideal environment if you want to conduct research and pursue specialized knowledge. You can rest assured that the university will do its best to provide support so that you can dedicate yourself to research.

留学生への メッセージ

「研究したい、専門知識を深めたい」と考える方には、広島工業大学はぴったりの環境です。研究に打ち込めるよう、大学側も全力でサポートしてくれるので安心です。



Introduction to activities between international students and HIT students

留学生と
日本人学生との
交流活動紹介

HIT offers a group of student volunteers "Kokusaikoryu volunteer" which supports international students. There are various events held with these volunteers both within and outside the Institute and international students can brush up their Japanese language abilities through these activities. It is also possible to make many friends in different departments and grades.

広島工業大学では、留学生をサポートする学生ボランティアのグループがあります。学内外で彼らとの様々な行事があり、これらの活動をととして日本語力をブラッシュアップすることができます。また、学科、学年を超えて友だちもたくさんできますよ。

Extracurricular activities

Activities for contact with the culture and history of Hiroshima through trips around the famous sites of Hiroshima such as the Hiroshima Peace Memorial Park and Miyajima. The student volunteers act as guides.

課外活動

平和記念公園や宮島など、広島の名勝を巡り、広島の世界遺産に触れる活動。学生ボランティアが案内します。



Evenings of international exchange

Events where overseas guest speakers introduce their home countries. The international students also act as the MC.

国際交流の夕べ

外国籍の方を招いて自身の出身国を紹介してもらうイベント。留学生が講師を務めることもあります。



HIT Festival

Authentic foods such as Chinese cuisine are sold in cooperation with the student volunteers. This is an extremely popular foods each year.

工大祭

学生ボランティアと協力して、中国料理などの外国本場の料理を販売。毎年大人気です。



Tutorials

These are activities where the student volunteers support the Japanese language learning of the international students. This also includes study for the Japanese-Language Proficiency Test.

日本語サポート

学生ボランティアが留学生に日本語学習のサポートをする活動。日本語能力試験の学習をすることもあります。



If you have problems, come to the Center for International Exchange

困ったときは国際交流センターへ!

The Center for International Exchange provides detailed support for international students on matters such as living, study, scholarships and Resident Status. Please visit the Center at any time if you do not understand something or have any concerns!

国際交流センターでは、留学生のみなさんの生活や学習、奨学金、在留資格等について、細かくサポートしています。分からないことや不安なことがあれば、いつでも訪ねてください!

Scholarships

奨学金申請に関すること

Resident Status

在留資格に関すること

Japanese language study and student life

日本語学習や大学生活に関すること



Department : Center for International Exchange , Hiroshima Institute of Technology

担当部署 : 広島工業大学国際交流センター

Address : 2-1-1 Miyake, Saeki-ku, Hiroshima 731-5193, Japan 所在地 : 〒731-5193 広島市佐伯区三宅2-1-1

TEL : +81-82-921-4164 / FAX : +81-82-921-8954 MAIL : intl@it-hiroshima.ac.jp

URL : <https://www.it-hiroshima.ac.jp/english/>